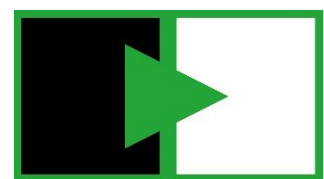
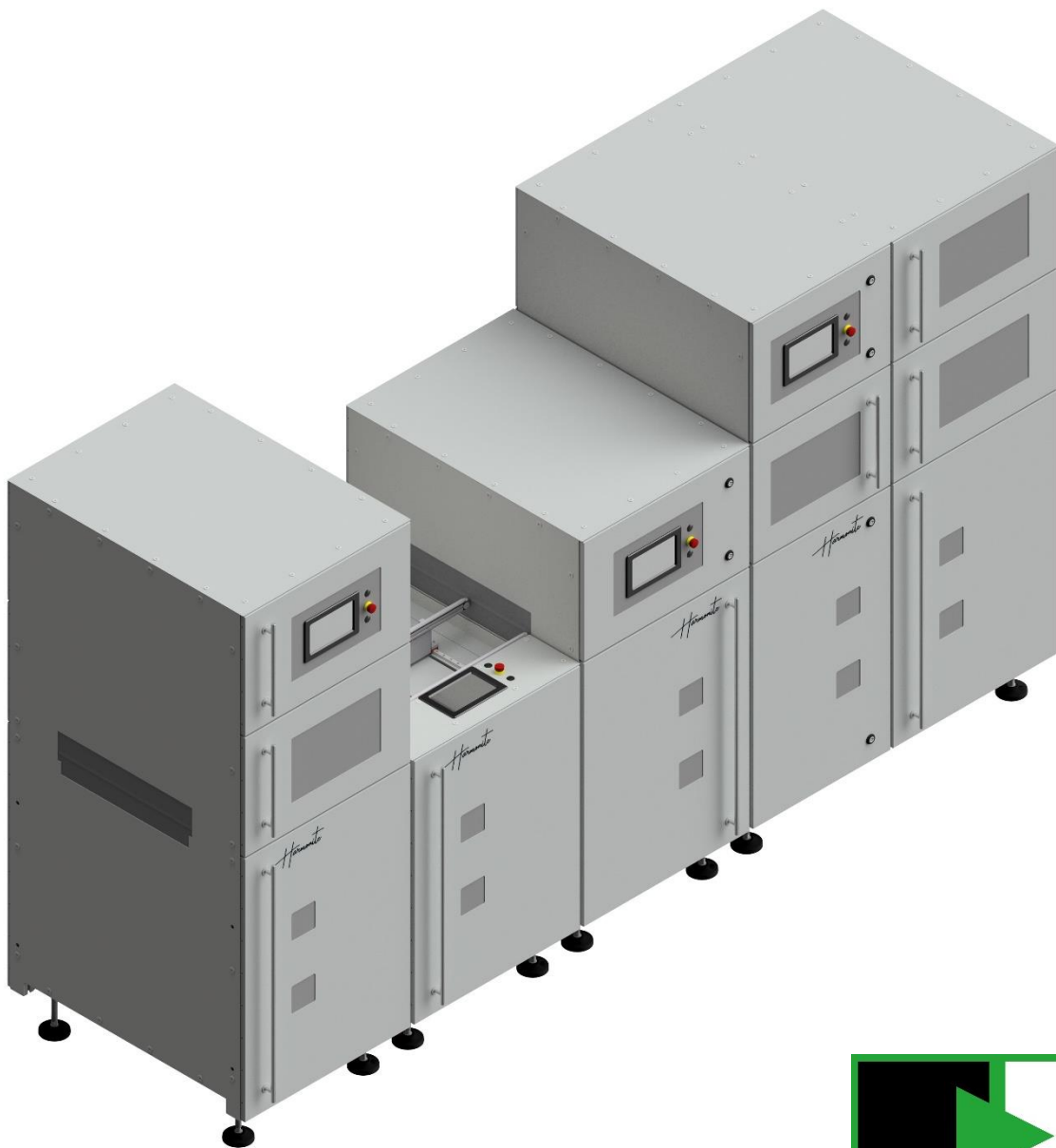
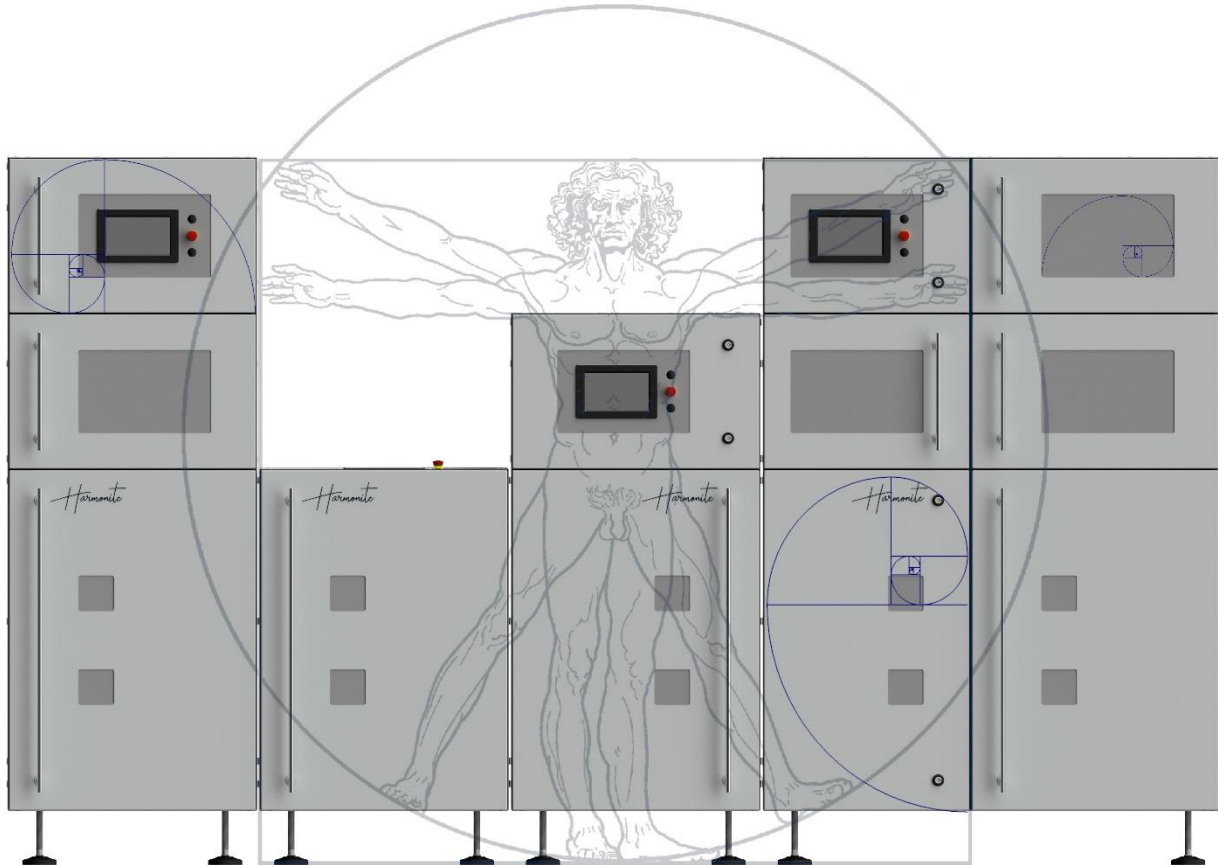


# ACHAT5

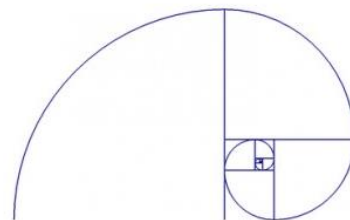


THE HERMES STANDARD



Leonardo da Vinci's Vitruvian Man, a homage to the ancient architect Vitruvius, sits enthroned in the middle of an SMT line segment. His proportions are perfectly balanced: The square of his shoulders corresponds to the circle of his mind. His arms and legs extend into space as if channeling the energy of the machine. If you look closely, you will recognize the spiral of the Fibonacci sequence that winds through the entire proportion design.

$$\phi = \frac{1 + \sqrt{5}}{2}$$



The Fibonacci number sequence:

Arranged in ascending order: 1, 1, 2, 3, 5, 8, 13, 21, 34, 55, .... this follows the pattern of the golden ratio, because the higher two consecutive Fibonacci numbers are divided, e.g. 21:13 the result 1.618 approaches the golden ratio, a proportion of harmony. The spiral corresponds to the shape of an ammonite. The "Harmonite" product brand was created from these harmonious, natural, artistic and mathematical influences.

# Board Handling Systems

*Harmonite*

*Harmonite*



**HARMONITE**

**LOADER-UNLOADER**

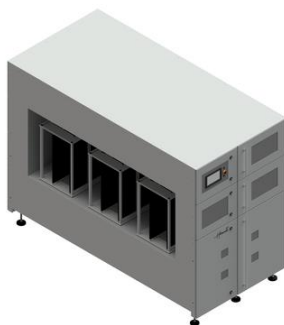
**BARE BOARD HANDLING**



**TRANSPORT CONVEYOR**

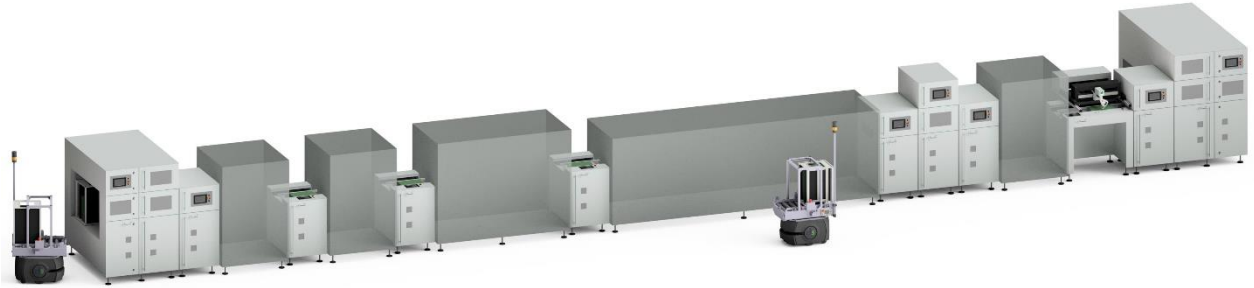
**CODE READER SYSTEM**

**BUFFERS FOR BOARDS**



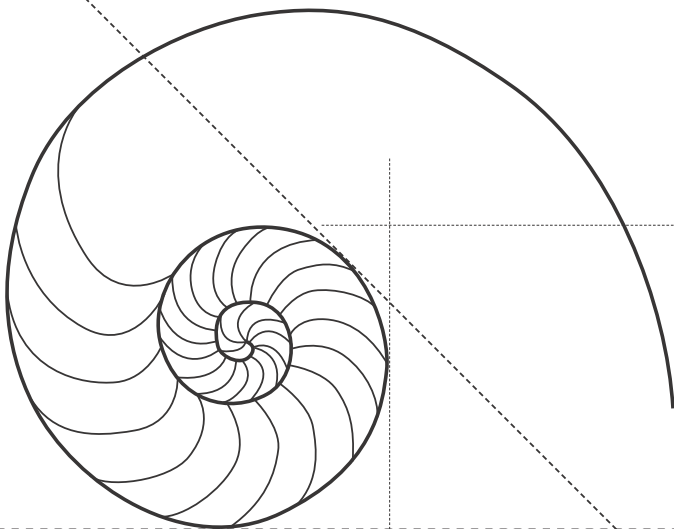
**MULTI MAGAZIN**

**AND MUCH MORE**



**Would you like to know more about our board handling systems?**

We would like to invite you to find out more about our innovative solutions in a personal meeting at our premises or at your site. Let's connect!



Achat Engineering GmbH  
Marie-Curie-Str. 3c  
38268 Lengede

[achat5.com](http://achat5.com)  
[info@achat5.com](mailto:info@achat5.com)

+49 5344 803 99 0